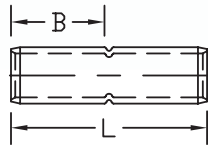


Crimp Splice - Tapered Barrel

Type BCU-T

- Manufactured from high conductivity seamless copper tubing
- Tin-plated to inhibit corrosion
- Beveled entry for easy cable insertion
- Tapered ends allow for easier application of insulation
- Positive cable stops to ensure proper insertion of conductors to full depth



BCU-T DIMENSIONS & INDEX REFERENCE

CATALOG NUMBER	COPPER CONDUCTOR SIZE	APPROX. DIMENSIONS (IN.)		NO. OF CRIMPS PER END	INSTALLATION TOOLING		WIRE STRIP LENGTH
		INSERTION LENGTH "B"	OVERALL LENGTH "L"		BURNDY DIE INDEX NO.	PENN-UNION DIE CATALOG NO.	
BCU-6-T	6 AWG	.88	1.88	1	7	T-7	1"
BCU-4-T	4 AWG	.88	1.88	1	8	T-8	1"
BCU-2-T	2 AWG	1.00	2.13	1	10	T-10	1-1/8"
BCU-1-T	1 AWG	1.00	2.13	1	11	T-11	1-1/8"
BCU-1/0-T	1/0 AWG	1.00	2.13	1	12	T-12	1-1/8"
BCU-2/0-T	2/0 AWG	1.06	2.25	1	13	T-13	1-3/16"
BCU-3/0-T	3/0 AWG	1.13	2.38	1	14	T-14	1-1/4"
BCU-4/0-T	4/0 AWG	1.13	2.38	1	15	T-15	1-1/4"
BCU-025-T	250 kcmil	1.25	2.63	1	16	T-16	1-3/8"
BCU-030-T	300 kcmil	1.25	2.63	1	17	T-17	1-3/8"
BCU-035-T	350 kcmil	1.31	2.75	1	18	T-18	1-7/16"
BCU-040-T	400 kcmil	1.44	3.00	1	19	T-19	1-9/16"
BCU-050-T	500 kcmil	1.69	3.50	1	20	T-20	1-13/16"
BCU-075-T	750 kcmil	2.06	4.25	1	24	T-24	2-3/16"
BCU-100-T	1000 kcmil	2.44	5.00	1	27	T-27P	2-9/16"